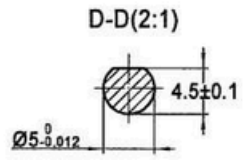
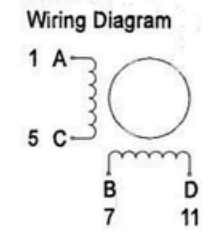
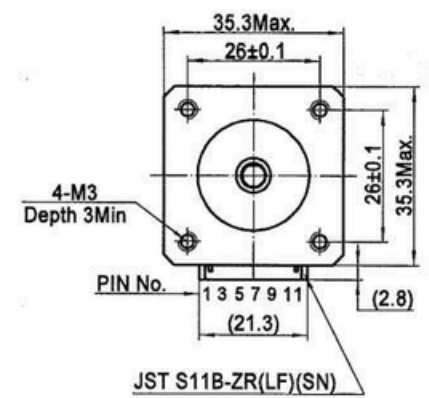
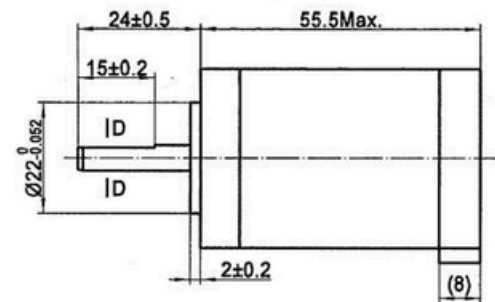


4611110015376



Exciting Sequence vs. Direction of Rotation

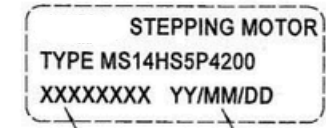
STEP	A	B	C	D
1	+	+	-	-
2	-	+	+	-
3	-	-	+	+
4	+	-	-	+

Clockwise view from mounting side

Specification

1. Number of Phase	2
2. Step Angle	1.8°
3. Rated Voltage	2.68V DC
4. Rated Current	2Amp
5. Holding Torque	0.4N.m Typ.(Two phase on/rated current)
6. Phase Resistance	1.34ohm±10%(20°C)
7. Phase Inductance	2.1mH±20%(1kHz 1V rms)
8. Rotor Interia	35g.cm <sup>2</sup>
9. Motor Weight	240g
10. Insulation Class	B(130°C)

Label Detail



Work Order Date Format

Unit: mm  
 FIRST ANGLE METHOD  
 Tolerances for linear and angular dimensions without individual tolerance indications  
 GB/T 1804-m eqv ISO 2768-1 : m  
 Geometrical tolerance for features without individual tolerance indications  
 GB/T 1184-K eqv ISO 2768-2 : K

Approve  
 Standardize  
 Process Review  
 Check  
 Design



REV.	REVISION RECORD	DATE
A	Original revision	2016.05.04